

stryker®

MicroSurgical Power Tools

stryker

C.O.R.E

**Consolidated
Operating
Room
Equipment**

- **Power**
- **Simplicity**
- **Versatility**
- **Customized Performance**
- **Standardization**

MicroSurgical Power Tools



Consolidated Operating Room Equipment

Best-in-Class:

- Power
- Simplicity
- Versatility
- Customized Performance
- Standardization

Product offerings:

- Sumex Drill
- Saber Drill
- U Drill
- UHT Drill
- MIS
- Maestro Drill
- Micro Drill
- Micro Saws
- Universal Driver
- ESSx Microdebrider
- Zyphr
- Accessories



Sumex Drill



5400-131-000 Sumex Handswitch

Sumex Drill

5400-130-000

- 75000 RPM
- Electronic Torque Feedback
(Increases RPM's when the drill is engaged in more demanding tasks)
- Tapered front end
(Allows for better line of sight)
- Takes SD/PD Attachments and Maestro Attachments
- Fixed and Steering Duragaurds
- Zyphr, Elite and MIS burs
- Complete OR Standardization

Saber Drill



5400-120 Saber Drill



5400-121 Saber Handswitch

Portmann



5100-120-44 Straight Saber Portmann Chuck



5100-120-45 Angled Saber Portmann Chuck

SD/PD Series Attachments



5100-120-450 SD/PD Series Straight Medium Attachment



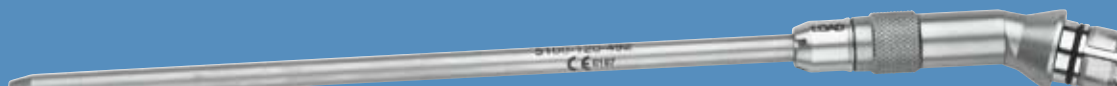
5100-120-470 SD/PD Series Straight Long Attachment



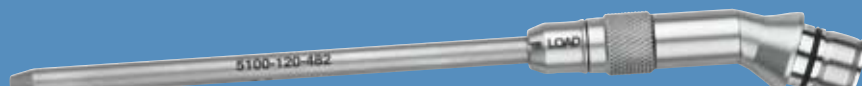
5100-120-480 SD/PD Series Straight Extra Long Attachment



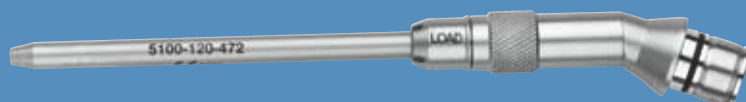
5100-120-490 SD/PD Series MIS Straight Attachment



5100-120-492 SD/PD Series MIS Angled Attachment



5100-120-482 SD/PD Series Angled Extra Long Attachment



5100-120-472 SD/PD Series Angled Long Attachment



5100-120-452 SD/PD Series Angled Medium Attachment

Elite Burs

One length of bur will fit every Elite attachment to simplify and reduce inventory.



5 step notch

5 step notch allows surgeon to customize and control minimum and maximum exposure settings to individual preferences and specific applications.

1 2 3 4 5

Numbered safety marks help surgeon and staff adjust bur exposure.

U Drill/UHT

U Drill



5400-100 CORE U Drill



5100-9 Handswitch

UHT Drill

Specifically designed for high torque uses including: Craniotomy, ACD, Cement Removal.



5400-110 UHT Drill



5400-111 UHT Handswitch

U Series Elite Attachments



5100-010-450 Medium Straight Elite



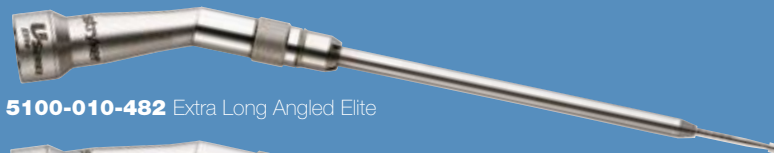
5100-010-470 Long Straight Elite



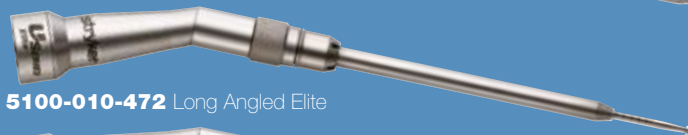
5100-010-480 Extra Long Straight Elite



5100-010-490 MIS Elite



5100-010-482 Extra Long Angled Elite



5100-010-472 Long Angled Elite



5100-010-452 Medium Angled Elite

Elite Burs

One length of bur will fit every Elite attachment to simplify and reduce inventory.



5 step notch allows surgeon to customize and control minimum and maximum exposure settings to individual preferences and specific applications.

Numbered safety marks help surgeon and staff adjust bur exposure.

U Series Attachments



5100-10-72
"AM" Long Angled



5100-10-52
"M" Medium Angled



5100-10-22
"O" Short Angled



5100-10-20 "O" Short Straight



5100-10-50 "M" Medium Straight



5100-10-70 "AM" Long Straight



5100-10-80 "R" Long Straight



5100-10-90 "RX" Extra Long Straight



5100-10-501 Adjustable Depth Drill Guide



5400-10-56 "D" Attachment



5100-10-11 Right Angle



5100-10-60 Perforator Chuck

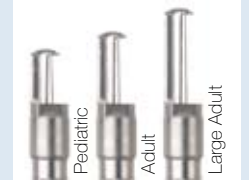
U Drill/UHT

DuraGuards



5400-10-xx DuraGuards

Pediatric	5400-10-57	Fixed
	5400-10-257	Steering
Adult	5400-10-58	Fixed
	5400-10-258	Steering
Large Adult	5400-10-59	Fixed
	5400-10-259	Steering



Tapered Router

For use with DuraGuards and D-Attachment

Head Diameter (mm)	1.5	1.7	1.7
Head Length (mm)	12.0	16.0	25.0
Dura Guard	D-57	D-58	D-59
Router	5120-71-57	5120-71-58	5120-71-59
Zimmer Equiv.	7021-713	7021-815	7021-917
Midas Rex Equiv.	B-5	B-1	S-1

MIS Attachments and burs

- Every MIS bur fits every MIS attachment
- 3.6 mm distal tip allows for excellent line of sight

- Variety of bur sizes and head styles



Ordering Information

ATTACHMENTS

MIS/Curved Attachments

5100-120-920	SD/PD MIS Medium Straight
5100-120-922	SD/PD MIS Medium Curved
5100-120-950	SD/PD MIS Long Straight
5100-120-952	SD/PD MIS Long Curved

5100-010-920	U-Series MIS Medium Straight
5100-010-922	U-Series MIS Medium Curved
5100-010-950	U-Series MIS Long Straight
5100-010-952	U-Series MIS Long Curved

BURS

MIS Neuro Burs

8420-107-015	MIS Neuro 1.5mm
8420-107-020	MIS Neuro 2.0mm
8420-107-025	MIS Neuro 2.5mm
8420-107-030	MIS Neuro 3.0mm

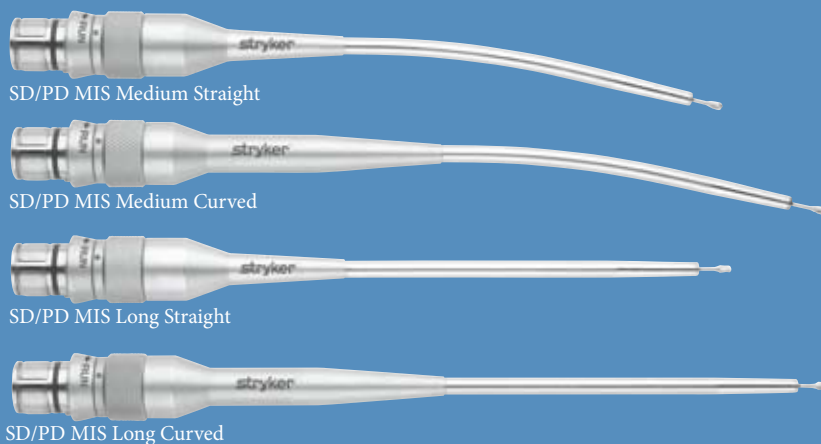
MIS Neuro Diamond Burs

8420-107-120	MIS Neuro Diamond 2.0mm
8420-107-125	MIS Neuro Diamond 2.5mm
8420-107-130	MIS Neuro Diamond 3.0mm
8420-107-135	MIS Neuro Diamond 3.5mm

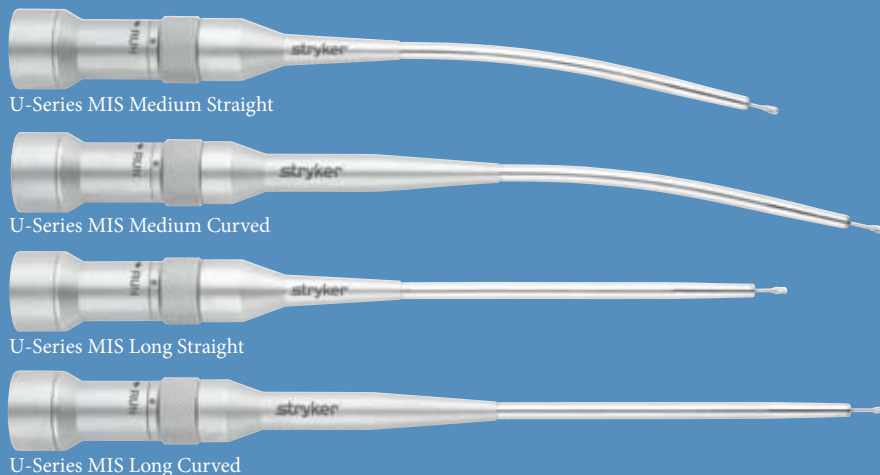
MIS Round Burs

8420-010-010	MIS Round 1.0mm
8420-010-020	MIS Round 2.0mm
8420-010-030	MIS Round 3.0mm

SD/PD MIS Attachments (FIT Saber, Sumex, Maestro)



U-Series MIS Attachments (FIT U-Drill)



Maestro Pneumatic Drill

(Not available in all countries)

Maestro Drill

5400-201-000 Maestro drill

5400-200-000 Maestro with handswitch
(shown)

- More power at lower PSI
- Straight and angled attachments
- Elite telescoping burs
- Decreased noise and increased reliability



Diffuser

5400-006-000 (10/pkg)

Oil Cartridge

5400-005-000 (10/pkg)

- Separate oil cartridge and diffuser for more consistent lubrication

Footpedal

5400-218-000

5400-208-000

- Three modes of operation (hand switch mode, silent mode, and braking mode)
- Variable speed control
- Simple set-up w/ irrigation console, and/or the Maestro hand piece hose.



Impaction Drill

MD Series



5100-15-250 Straight



5100-15-270 Long Straight



5100-15-252 Angled



5100-15-272 Long Angled



260-901-21 1:1 Reducer



260-901-23 16:1 Reducer



260-901-24 64:1 Reducer



260-901-25 256:1 Reducer **260-901-20** 1:1 Contra-Angle Head



260-901-26 1024:1 Reducer



5100-15-43 4:1 Straight Reducer



5400-15 Micro Drill



Impaction Drill



5400-300 Impaction Drill



2296-301-000 Bur Guard

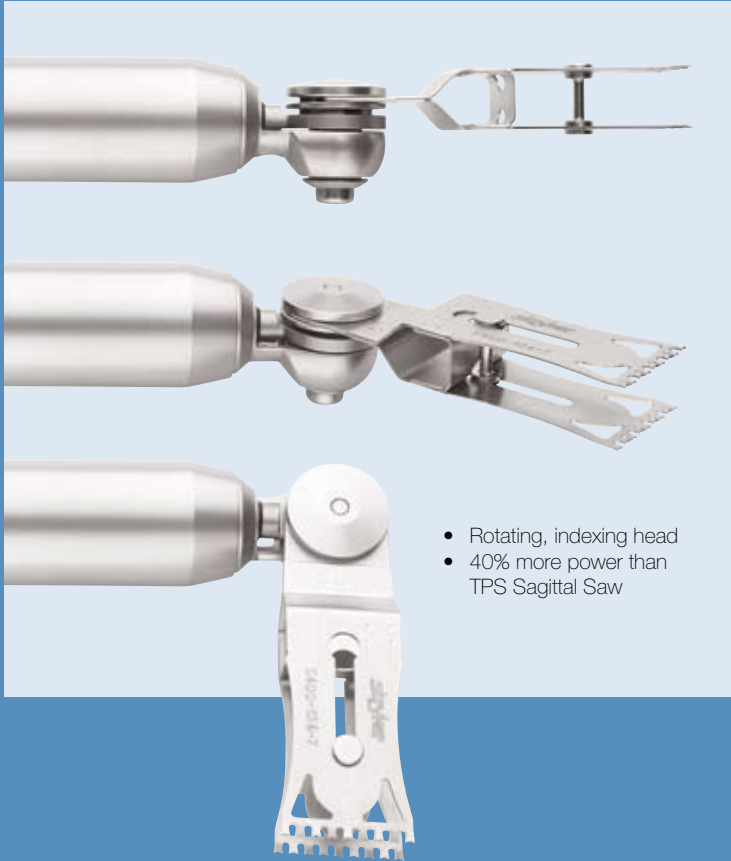


2296-300-000 Bur Shield



Micro Saws

Sagittal Saw Advantages



5400-034-000
Sagittal Saw



5400-031-000
Oscillating Saw



5400-037-000
Reciprocating Saw



Micro Dual-Cut Blades

Dual-Cut Advantages

- 21% More Efficient Cut than standard blade*.
- 35% Reduction of heat than standard blade*.



*Than standard blade

Universal Driver



5400-99 Universal Driver

4100-125
Pin Collet
(Accepts pins from
.078-.125"
diameter)



4100-62
Wire Collet
(Accepts wires from
.028-.078" dia.)

Drilling Attachments



4100-110 Synthes® Drill



4100-131 1/4" Jacobs® Drill



4100-132 5/32" Jacob Drill



4100-135 Hudson®/ Modified Trinkle Drill



4100-160 Trinkle Drill



Specialty



4100-700 High Speed Bur Attachment



4100-400 Sagittal Saw Attachment

Universal Driver

Reaming



4100-210 Synthes® Reamer



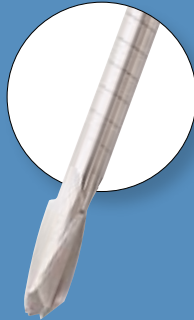
4100-260 Trinkle Reamer



4100-231 Jacobs® Reamer



4100-235 Hudson®/ Modified Trinkle Reamer



4100-335 Right Angle Drive Modified Trinkle Reamer



4100-310 Right Angle Drive Synthes® Reamer

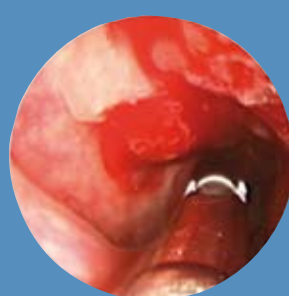
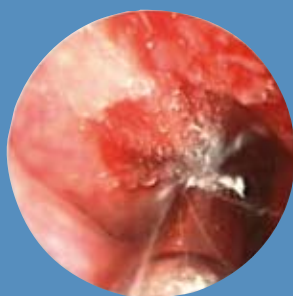
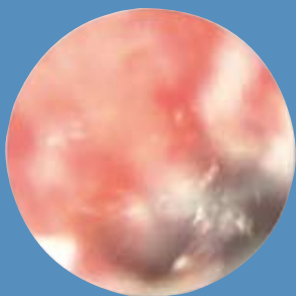


4100-355 Radiolucent Right Angle Drive

ESSx™ Microdebrider

ESSx Microdebrider

5290-601-200



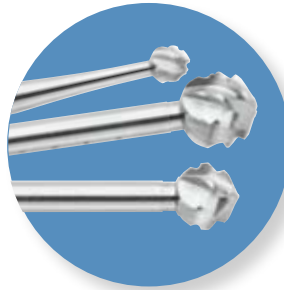
- Max RPM in oscillation mode (standard): 5,000 RPM
- Improved ergonomics and balance
- Increased cutting efficiency
- Straight through suction: Helps ensure less clogging
- Improved US patented flush feature: Surgeon can manually unplug hand piece using its own irrigation out flow allowing for quicker removal of clogs and decreased OR time
- Integrated scope cleaning: Cleans the endoscope allowing for less manual cleaning during the case

ENT Cutters and Burs

- All blades are irrigated through the entire channel including the tip
- Preserves mucous membranes

SharpEdge		
Dia.	Order #	Length
4.0 mm	5290-340-000	8cm
Aggressive		
Dia.	Order #	Length
2.5 mm	5290-628-000	8cm
3.5 mm	5290-638-000	8cm
4.0 mm	5290-648-000	8cm
4.0 mm	5290-011-000	11cm
Aggressive Serrated		
Dia.	Order #	Length
3.5 mm	5290-635-000	8cm
4.0 mm	5290-645-000	8cm
Jaguar		
Dia.	Order #	Length
3.5 mm	5290-530-000	8cm
4.0 mm	5290-540-000	8cm
Angled Aggressive 40°		
Dia.	Order #	Length
4.0 mm	5290-740-100	11cm
Angled Aggressive 40° Convex		
Dia.	Order #	Length
4.0 mm	5290-740-200	11cm
Angled Aggressive 12°		
Dia.	Order #	Length
4.0 mm	5290-744-100	11cm
Hooded Round Bur		
Dia.	Order #	Length
3.0 mm	5290-647-000	8cm
Unhooded Round Bur		
Dia.	Order #	Length
2.0 mm	5290-220-000	8cm

Zyphr™ Burs



Zyphr™ Elite Round Fluted Burs

Part Number	Head Dia. (mm)
5820-010-620	2.0
5820-010-625	2.5
5820-010-630	3.0
5820-010-635	3.5
5820-010-640	4.0
5820-010-650	5.0
5820-010-660	6.0
5820-010-670	7.0
Extended	
5820-010-920	2.0
5820-010-930	3.0
5820-010-940	4.0

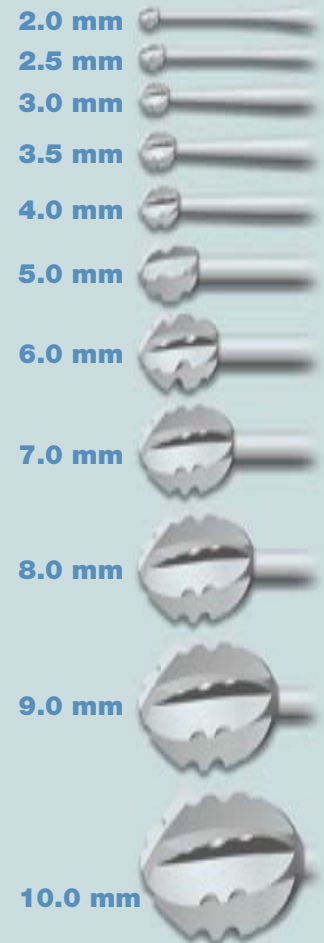
Zyphr™ Burs

- Free cutting; efficient, effective bone removal with less effort
- Smoother cuts and reduced chatter
- Flute technology maximizes bone chip clearance and reduces clogging
- Neck design improves line of sight

Zyphr™ TPS Round Fluted Burs

Part Number	Part Number	Head Dia. (mm)
Medium		
5220-010-630	5230-010-630	3.0
5220-010-635	5230-010-635	3.5
5220-010-640	5230-010-640	4.0
5220-010-650	5230-010-650	5.0
5220-010-660	5230-010-660	6.0
5220-010-670	5230-010-670	7.0
5220-010-680	5230-010-680	8.0
5220-010-690	5230-010-690	9.0
5220-010-100	5230-010-100	10.0
Extended Medium		
5220-010-930	5230-010-930	3.0
5220-010-940	5230-010-940	4.0
5220-010-950	5230-010-950	5.0
5220-010-960	5230-010-960	6.0

Available Head Sizes



Accessories

Storage options

5700-054-001 Saber Bur Rack

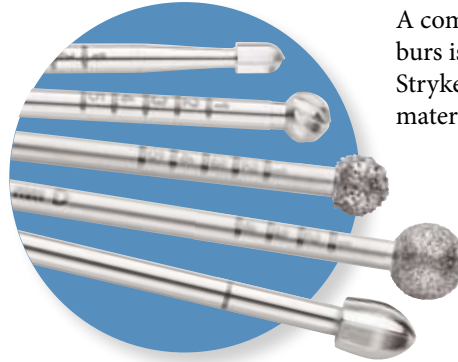
5700-054-002 Saber/Stapes Bur Rack

0298-098-100 Bur Organizer



5400-410
CORE Accessory Cart

Burs



A complete line of surgical burs is available for every Stryker handpiece in multiple materials, lengths and head sizes.

Blades



Stryker manufactures precision, laser cut blades for all CORE saws. These blades are offered in a number of sizes and tooth configurations.

More Available

Stryker offers a wide variety of cutting accessories for all types of applications. For a complete listing please contact your local Stryker Sales Representative or customer service.

System Accessories

Core Console



5400-50 CORE Console with Integral Irrigation Pump

Footswitches



277-200-100 I-Switch Wireless Universal Foot Control



Irrigation

- 5400-050-001** CORE single handpiece Cassette
- 5400-050-002** CORE dual handpiece Cassette

Sterilization

- 5400-276** CORE Sterilization Case (Small)
- 5400-277** CORE Sterilization Case (Medium)
- 5400-278** CORE Sterilization Case (Large)

*Multiple sterilization cases are available in both plastic and stainless steel.



277-100-100 I-Switch Wireless Footpedal



5100-8 TPS Footswitch



Joint Replacements

Trauma, Extremities, Deformities

Craniomaxillofacial

Spine

Biologics

Surgical Products

Neuro & ENT

Interventional Pain

Navigation

Endoscopy

Communications

Imaging

Patient Handling Equipment

EMS Equipment

Solely for use by Health Care Professionals.

The information presented in this brochure is intended to demonstrate the breadth of Stryker product offerings. Always refer to the package insert, product label and/or user instructions before using any Stryker product. Products may not be available in all markets. Product availability is subject to the regulatory or medical practices that govern individual markets. Please contact your Stryker representative if you have questions about the availability of Stryker products in your area.

Products referenced with TM designation are trademarks of Stryker.

Products referenced with * designation are registered trademarks of Stryker.

NasoPore® is a registered trademark of Polyganics B.V. Netherlands.

NasoPore® is manufactured by Polyganics B.V. Netherlands and distributed in the U.S. by Stryker.

Technical information within has been provided by Polyganics B.V. Netherlands.



Literature Number: MTX9100927017 Rev. 1
MTX/GS 09/07

Copyright © 2007 Stryker

Stryker SA
Cité Centre, Grand-Rue 90
1820 Montreux, Switzerland
t: +41 21 966 12 01
f: +41 21 966 12 00

www.stryker.com